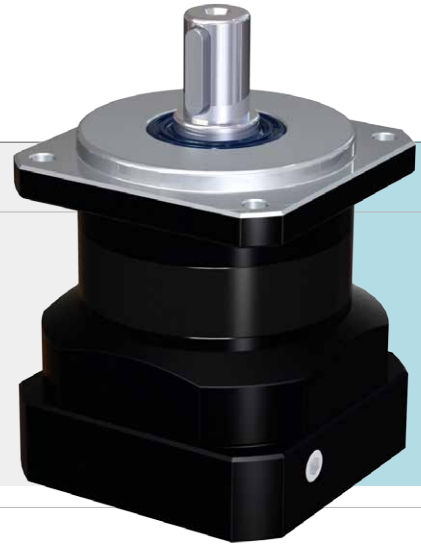


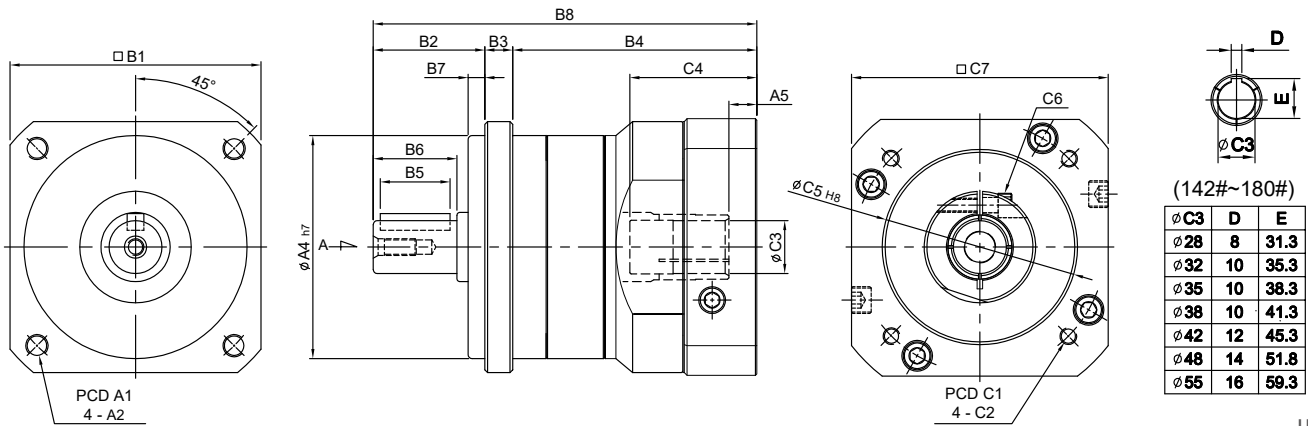
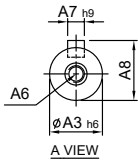
FABGEAR Planetary Reducers



MODEL : FA

單段 1-Stage

RATIO : 3, 4, 5, 7, 10



(142#~180#)

∅C3	D	E
∅28	8	31.3
∅32	10	35.3
∅35	10	38.3
∅38	10	41.3
∅42	12	45.3
∅48	14	51.8
∅55	16	59.3

unit: mm

Model Code	50	70	80	90	100	120	142	180
A	A1 60	A1 76	A1 90	A1 100	A1 115	A1 135	A1 165	A1 215
	A2 M5 x P0.8	A2 ∅5.5	A2 M6 x P1.0	A2 M8 x P1.25	A2 M8 x P1.25	A2 M10 x P1.5	A2 M12 x P1.75	A2 M14 x P2.0
	A3 12	A3 16	A3 19	A3 19	A3 24	A3 32	A3 40	A3 55
	A4 50	A4 60	A4 70	A4 80	A4 90	A4 110	A4 130	A4 160
	A5 4.5	A5 6	A5 10	A5 10	A5 8 · 22.5	A5 10	A5 10	A5 11.5
	A6 M4 x P0.7 deep 11	A6 M5 x P0.8 deep 14	A6 M6 x P1.0 deep 15	A6 M6 x P1.0 deep 15	A6 M8 x P1.25 deep 20	A6 M10 x P1.5 deep 23	A6 M10 x P1.5 deep 23	A6 M14 x P2.0 deep 32
	A7 4	A7 5	A7 6	A7 6	A7 8	A7 10	A7 12	A7 16
	A8 13.5	A8 18	A8 21.5	A8 21.5	A8 27	A8 35	A8 43	A8 59
B	B1 52	B1 70	B1 80	B1 90	B1 102	B1 120	B1 142	B1 180
	B2 32	B2 36	B2 50	B2 40	B2 61	B2 72	B2 87	B2 106
	B3 6	B3 7	B3 11	B3 10	B3 13	B3 10	B3 15	B3 16
	B4 58.5	B4 72/80	B4 76.5	B4 87.5	B4 89.5/104	B4 123/133	B4 158.5	B4 201.5/204.5
	B5 15	B5 20	B5 25	B5 25	B5 30	B5 40	B5 65	B5 70
	B6 20	B6 28	B6 30	B6 30	B6 40	B6 50	B6 74	B6 82
	B7 4.5	B7 7	B7 5	B7 6	B7 5	B7 10	B7 10	B7 20
	B8 96.5	B8 115 · 123	B8 137.5	B8 137.5	B8 163.5 · 178	B8 205 · 215	B8 260.5	B8 323.5 · 326.5
C	C1 45 · 46 · 48.5 · 63 · 70	C1 70 · 75 · 85	C1 70 · 90 · 100 · 115	C1 90 · 100 · 115 · 145	C1 90 · 100 · 115 · 145	C1 115 · 145 · 165	C1 130 · 145 · 165 · 175 · 215	C1 149 · 200 · 215 · 265 · 300
	C2 M3 · M4 · M5	C2 M5 · M6	C2 M5 · M6	C2 M6 · M8	C2 M6 · M8	C2 M6 · M8 · M10	C2 M8 · M10 · M12	C2 M8 · M12 · M16
	C3 8 · 10 · 11 · 14	C3 11 · 14 · 16 · 19	C3 16 · 19	C3 16 · 19	C3 19 · 22 · 24	C3 22 · 24 · 28 · 32	C3 28 · 32 · 35 · 38	C3 35 · 38 · 42 · 48 · 55
	C4 32	C4 33.5 · 41.5	C4 45.5	C4 45.5	C4 51 · 65.5	C4 67 · 77	C4 84.5	C4 114.5 · 117.5
	C5 30 · 40 · 50	C5 50 · 60 · 70	C5 50 · 70 · 80 · 95	C5 70 · 80 · 95 · 110	C5 70 · 80 · 95 · 110	C5 95 · 110 · 130	C5 110 · 130 · 180	C5 114.3 · 180 · 230 · 250
	C6 M4 x P0.7	C6 M5 x P0.8	C6 M5 x P0.8	C6 M5 x P0.8	C6 M6 x P1.0	C6 M8 x P1.25	C6 M10 x P1.5	C6 M10 x P1.5
	C7 46 · 55 · 60	C7 64 · 70 · 80	C7 80 · 92 · 110	C7 92 · 110 · 130	C7 92 · 110 · 130	C7 122 · 130 · 150	C7 146 · 150 · 190	C7 182 · 200 · 250 · 265



規格 Parameter	代號	單位 Unit	速比 Ratio	50	70	80	90	100	120	142	180
額定輸出扭矩 Rated Output Torque (Nominal output torque)	T_{2N}	Nm	3	19	54	112	112	165	286	550	1,060
			4	16	48	110	110	146	255	490	940
			5	16	45	108	108	160	264	510	1,050
			7	15	41	105	105	149	245	470	970
			10	14	40	100	100	141	234	450	930
最大加速扭矩 Max. Acceleration Torque	T_{2B}	Nm	3 ~ 10	1.8 倍額定輸出力矩 1.8 Times of Rated Output Torque							
最大輸出扭矩 Max. Output Torque 急停扭矩 Emergency Stop Torque	T_{2NOT}	Nm	3 ~ 10	3 倍額定輸出力矩 3 Times of Rated Output Torque							
額定輸入轉速 Rated Input Speed	n_{1N}	rpm	3 ~ 10	3,000	3,000	3,000	3,000	3,000	3,000	3,000	3,000
最大輸入轉速 Max. Input Speed	n_{1B}	rpm	3 ~ 10	5,000	5,000	5,000	5,000	5,000	5,000	5,000	5,000
背隙 Backlash		arcmin	3 ~ 10	≤ 8	≤ 8	≤ 8	≤ 8	≤ 8	≤ 8	≤ 8	≤ 8
扭轉剛性 Torsional Rigidity		Nm/arcmin	3 ~ 10	3	5	12	12	14	23	60	140
容許徑向力 Max. Radial Force	F_{2rB}	N	3 ~ 10	350	800	1,200	1,200	3,200	5,220	8,800	14,800
容許軸向力 Max. Axial Force	F_{2aB}	N	3 ~ 10	180	400	600	600	1,600	2,600	4,400	7,400
使用壽命 Service Life	L_H	hr	3 ~ 10	S5 周期運轉 : >30,000 (S1 連續運轉 : >15,000 hrs) S5 Cycle Operation: >30,000 (S1 Continuous Operation: >15,000 hrs)							
效率 Efficiency	η	%	3 ~ 10	≥ 97%							
使用溫度 Operating Temperature		°C	3 ~ 10	- 25° C ~ + 90° C							
潤滑 Lubrication			3 ~ 10	全合成潤滑油脂 Synthetic Grease							
防護等級 Protection Class			3 ~ 10	IP65							
安裝方向 Mounting Position			3 ~ 10	任意方向 Any							
噪音值 Noise Level		dB	3 ~ 10	≤ 58	≤ 58	≤ 60	≤ 60	≤ 65	≤ 67	≤ 69	≤ 70
重量 Weight ±2%		Kg	3 ~ 10	0.64	1	1.6	1.96	3.76	7.43	16.7	33

■ 轉動慣量 Mass Moments of Inertia (kg.cm²)

Ratio	50	70	80	90	100	120	142	180
3	0.03	0.16	0.48	0.48	0.60	3.21	9.2	29.0
4	0.03	0.14	0.38	0.38	0.45	2.64	7.5	23.7
5	0.03	0.13	0.38	0.38	0.45	2.64	7.4	23.3
7	0.03	0.13	0.38	0.38	0.45	2.62	7.1	22.5
10	0.03	0.13	0.35	0.35	0.41	2.51	7.0	22.5